



TIFF to Image Converter 1.0

TIFF to Image converter converts TIFF files into image files, like JPG (JPEG), PNG, GIF and BMP.

Overview

- All Batch conversion options into one easy to use user interface.
- Support all popular image formats.
- Search files based on Name, Pages, File Size, Type and Date.
- Export the list of files.

Trial Version limitation and How to purchase and Register?

Our trial version is a full featured version but can convert limited number of files for every process which we think is sufficient to try before making a decision to purchase. It does not have any other limitations. When you purchase the application, we send you the registration code. You can register your application using this registration code and there will be no limitation in the application.

User Interface Guide

A. [Managing Files](#)

a. [Adding Files](#)

- [Drag and Drop Files](#)
- [Choose the files you want to add into application](#)
- [Add folder and sub-folder with files into it](#)
- [Import Files](#)
- [Search Files based on search criteria](#)

b. [Deleting Files](#)

B. [Conversion Options](#)

a. [Naming Options](#)

b. [Conversion Format](#)

c. [DPI Settings](#)

d. [Image Settings](#)

C. [Export](#)

D. [Output Options](#)

E. [Options](#)


A. Managing Files

a. Adding Files: You can add TIFF files, you want to convert into image files. There are five ways to add the files in the grid.


(i) Drag and Drop Files

You can just drag and drop files and folders into the application and it will search for the supported file types and add into the application.


(ii) Choose the files you want to add into application

Press  button and choose the files you want to add.


(iii) Add folder and sub-folder with files into it

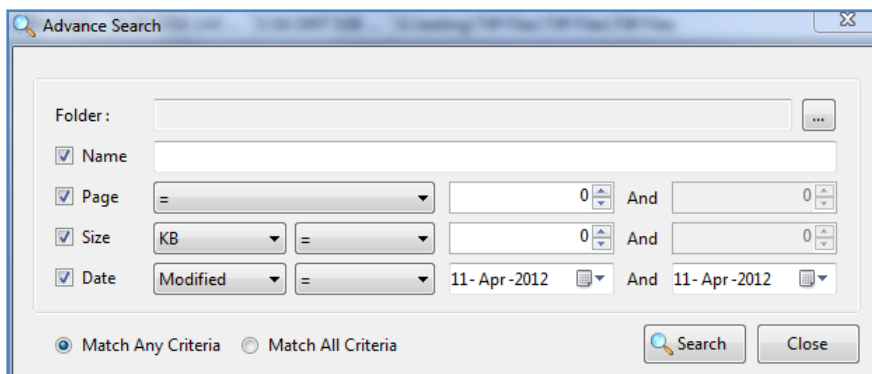
Press  button if you want to add all the files in one folder. You can select "Include subfolder", if you have files within sub-folder. If this check box is checked then the application will look for supported file types into sub-folder also.

(iv) Import Files

You can choose this option by clicking at  to add files into application if you have list of files into a text file. You can also copy and paste your list into text box.

(v) Search Files based on search criteria

Click at  and you can search files based on certain search criteria, such as Name, Page, Size and Date.



Some of the example of how you can use the search

1. You can find files with 3 or more pages.
2. You can find files which match specific date or created in between given dates.
3. You can find with file size of more than 200 MB.
4. You can find files with name starts with 'office'.



After defining the search criteria, you can select any of these two options to match your criteria selected.

- Match any criteria

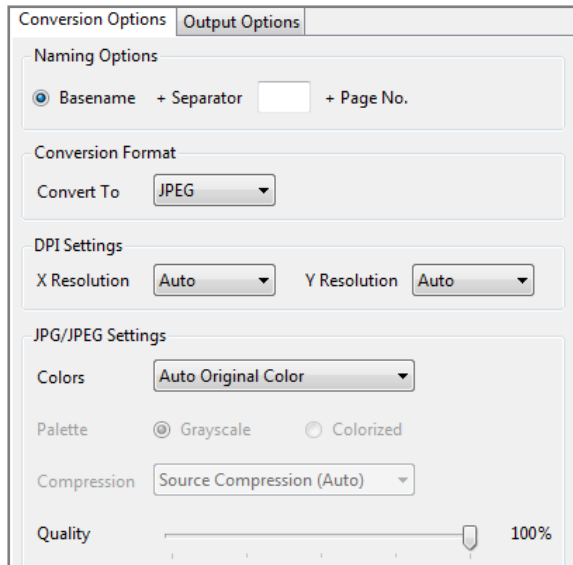
By default search option is Match any criteria. That means the application will find the files that matches any search criteria. For example you can give multiple search criteria but application will find all the files matches to any of these search criteria.

- Match all criteria

If you want to find the files which matches all the selected criteria then you can choose this option.

b. Deleting Files: If you want to delete any file in the grid, select the file and right click -> Remove Selection or you can press Delete button on your keyboard as well or click at . If you want to delete all the files in the grid, either right click on any file -> Remove All or click at .

B. Conversion Options



a. Naming Options

You can choose the Separator between the Base File name and Page Number. It creates the pattern based on your inputs and name the newly created split files. For example, when you convert one 12 page TIFF Document into JPEG files then the application will create 12 JPEG files and it will be named as Base Name + Separator (Which you can choose) + Page Number. Therefore, if your TIFF Document is Office.TIFF and separator is - then it creates 12 files as Office-01, Office-02.....Office-12.

b. Conversion Format

You can choose the Image format in which you want to convert the TIFF file.

c. DPI Settings

You can choose the DPI settings for the output file.

d. Image Settings

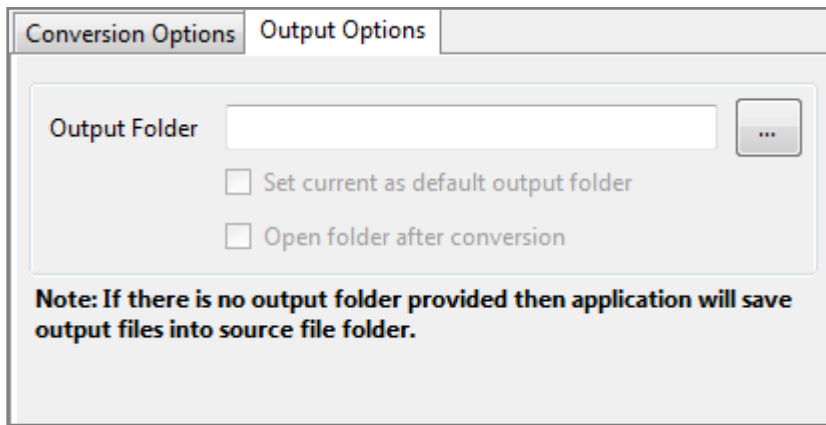
You can change the image settings as per the output format selected.



C. Export

You can export the list of files you can see in file grid into text delimited text file. All the columns you can see will be in exported text files separated by a tab.

D. Output Options



Conversion Options Output Options

Output Folder ...

Set current as default output folder

Open folder after conversion

Note: If there is no output folder provided then application will save output files into source file folder.

You can choose output folder, where you want to save the file. You can also set the default Output folder for all the conversions.

If you wish to open the folder immediately after the conversion is over, you can select the option "Open folder after Conversion".



E. Options

- (i) **Hide when Minimized:** If this option is checked then application will be hidden in the system tray icon when you minimize it.
- (ii) **Show System Tray:** If this option is checked then you can see system tray icon of application.